

thermoscientific



Flexible system solutions with
uncompromised level of performance

Indiko and Indiko Plus
clinical and specialty chemistry analyzers

ThermoFisher
SCIENTIFIC

Operational excellence

Thermo Scientific™ Indiko™ series, Indiko and Indiko Plus, are fully automated random access bench-top systems for clinical and specialty chemistry testing. Analyzer, reagents and consumables form a reliable, fully supported system solution offering to the laboratory ease of use and time saving automation that supports routine daily work. The Indiko systems offer optimal operational excellence for small and medium sized laboratories.



Ease-of-use in daily routine

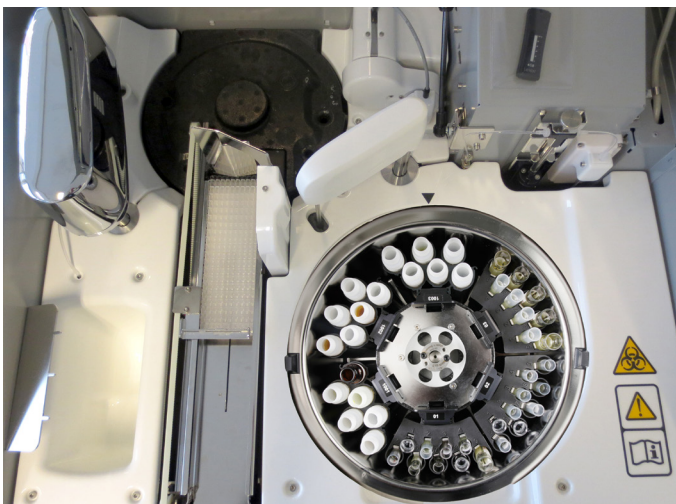
Various automated features

- Automated daily start-up procedures.
- Any mix of sample cups and bar-coded primary tubes can be loaded at the same time.
- Automated clot detection.
- Versatile automated dilution features.
- Reflex testing capability offers savings in operator time.
- Built-in real-time QC program.
- Automated real-time monitoring of the reagent usage and expiry date.
- Full traceability of calibration and reagent lot data.
- Bi-directional LIS connection.

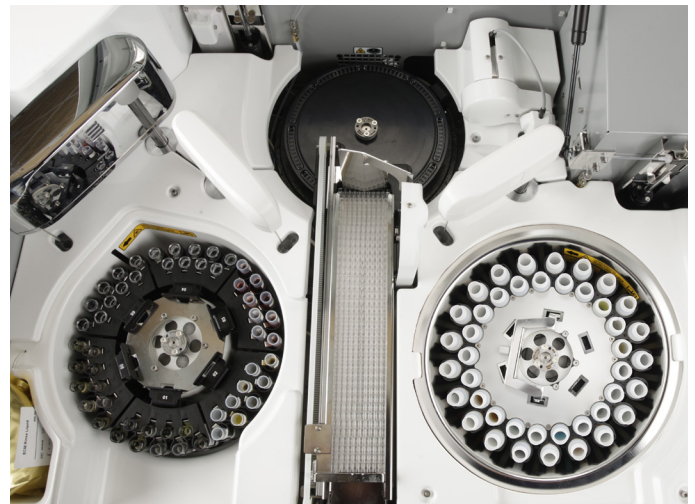


Intuitive user interface manages the daily workload fluently.

Indiko and Indiko Plus analyzers provide true operational reliability and walk-away convenience.



Indiko system includes combined sample and reagent disk for max 6 racks: 9- or 18-position sample racks and 6-position reagent racks.



Indiko Plus system has a sample disk for up to 108 samples: 9- or 18-position sample racks, max 6 racks. Reagent disk in Indiko Plus has positions for 42 reagents.

Simplicity in sample and reagent management

Versatile sample management

Three different sample racks are available for user convenience.

- Two 9-position racks can be adjusted for different aspiration heights. They both can be used for 0.5 and 2.0 ml cups and 5, 7 or 10 ml tubes.
- 18-position rack can be used either for 0.5 and 2.0 ml cups or for non-barcoded 7 ml tubes.



Reagent rack used in Indiko

- 6-position reagent racks are used only in Indiko analyzer. Indiko Plus analyzer has a reagent disk.



Any mix of sample cups or tubes can be used.

Analysis of several different tests from the same sample and from different sample types promotes efficiency.

Unique cuvette design reduces operating costs

Unique cuvette design

The low-volume cuvette technology is the basis of the Indiko system's cost effectiveness.

- Reagent volumes vary typically from 100 to 200 μl , a complete reaction volume being 120 to 300 μl .
- Each cuvette cell is used only once to ensure accurate and precise results.
- Minimal water consumption.



Cuvette loader for 360 cells. Low-volume reaction cuvette uses reagent and water for lower environmental impact.



Temperature controlled incubator for 90 cuvette cells. Cuvettes are disposable, so there is no need for extra rinsing to prevent carry-over.



The analyzer is self-contained with no need for external water or drainage connections, which makes the analyzer quick and easy to install.

Continuous access to samples, reagents and cuvettes without interrupting test processing.

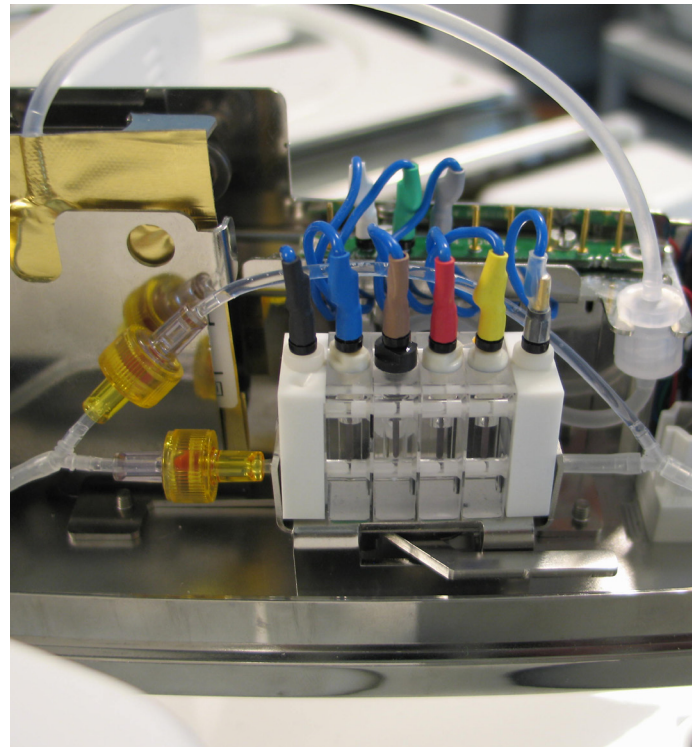
Complete assay solution with optimized system reagents

Extensive test menu

The extensive menu of clinical chemistry reagents, electrolytes, specific proteins, drugs of abuse, therapeutic drug monitoring and immunosuppressant drug assays in a single Indiko platform provides an excellent solution for patient monitoring. Getting results without compromising quality enables doctors to make the critical decisions sooner. System reagents, specially developed and optimized for Indiko analyzers, are ready-to-use, saves operator time and enables reliability.

The unique, low-volume cuvette design guarantees small reagent volumes, minimal amount of reagent waste, and thus secure low reagent cost. Volume optimized kit sizes and on-board stability minimizes the amount of waste further and increases cost-efficiency. Methods are traceable to international reference methods and materials adding confidence in the accuracy and precision of patient results.

Fully validated and supported application protocols provide traceable results.



Optional ISE unit uses ion selective electrodes for Sodium, Potassium and Chloride measurements.

High quality test results for effective patient care

Clinical Chemistry*	Specific Proteins*	DATs	TDMs*	Serum Toxicology
Albumin	Albumin in urine	Amphetamines	Amikacin	Acetaminophen
Alkaline Phosphatase	Antistreptolysin O	Amphetamines / Ecstasy	Carbamazepine	Barbiturate
ALT	Apolipoprotein A1	Barbiturate	Digoxin	Benzodiazepine
Amylase	Apolipoprotein B	Benzodiazepine	Digitoxin	Tricyclic Antidepressants
AST	Complement C3	Buprenorphine	Gentamicin	
Bicarbonate	Complement C4	Cannabinoids (THC)	Lamotrigine	
Bilirubin	CRP	Cocaine	Lidocaine §	Oral Fluid Assays*
Calcium	CRP, high sensitivity	Cotinine	Phenytoin	Amphetamine
Cholesterol	D-Dimer	Ecstasy	Quinidine	Methamphetamine
Cholinesterase	Ferritin	Ethyl Alcohol	Teicoplanin	Cocaine
HDL-Cholesterol	HbA1c	Ethyl Glucuronide†	Theophylline	Opiate
LDL-Cholesterol	Immunoglobulin A	Fentanyl †	Tobramycin	PCP
CK	Immunoglobulin G	Heroin Metabolite	Topiramate	THC
CK-MB	Immunoglobulin M	Hydrocodone ‡	Valproic Acid	
Creatinine	Rheumatoid Factors	LSD	Vancomycin	Specimen Validity Tests
Gamma-GT	sTfR	Methadone	Zonisamide	Creatinine-Detect
Glucose	Transferrin	Methadone Metabolite	ISDs*	General Oxidant-Detect
Iron	Electrolytes*	Opiate	Cyclosporine	Gravity-Detect
LDH	Chloride	Opiate 2K	Everolimus	pH-Detect
Lipase	Sodium	Oxycodone	Tacrolimus	Sample Check
Magnesium	Potassium	Phencyclidine (PCP)	Mycophenolic Acid	
Phosphorus		Propoxyphene		
Total Protein				
Triglycerides				
U/CSF Protein				
Urea				
Uric acid				

* Products are CE marked. They are not 510(k)-cleared for use on the Indiko / Indiko Plus and not available for sale in the U.S. for use on the Indiko / Indiko Plus.

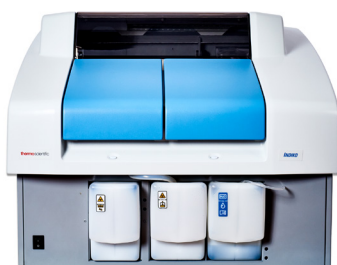
† Products are CE marked. They are not 510(k)-cleared but are available for sale in the US for Criminal Justice & Forensics (CJ&F).

‡ For use in the USA and Canada only

§ For use in the USA only

Availability of products in each country depends on the local regulatory marketing authorization status.

Indiko



Indiko Plus



Capacity	Photometric tests/hour: up to 200 ISE tests/hour: up to 120	Photometric tests/hour: up to 350 ISE tests/hour: up to 135
On-Board Sample Capacity	Max 90 with 5 x 18-pos. sample rack and 1 x 6-pos. reagent rack	Max 108 with 6 x 18-pos. sample rack
On-Board Reagent Capacity	Max 30 with 1 x 9- or 18-pos. sample rack and 5 x 6-pos. reagent rack	Max 42 reagent positions
Walk-away Time	Up to 2 hours	Up to 3 hours
Water Consumption	1.5 liter / hour	2.5 liters / hour
Dimensions (WxDxH) & Weight	75 cm x 70 cm x 62 cm / 130 cm with the open cover & 85 kg 29,5 in x 27,6 in x 24,4 in/ 51 in with the open cover & 187 lbs	94 cm x 70 cm x 62 cm / 130 cm with the open cover & 110 kg 37 in x 27,6 in x 24,4 in/ 51 in with the open cover & 242 lbs

Compact automation enhancing the quality of patient care

- IVD compliant, automated, cost-effective solution
- Sample oriented analysis
- Minimal maintenance, maximized analyzer uptime
- Optimized, liquid system reagents
- Ready-to-use, maintenance-free electrodes

In Europe:

+358-10-329-200
system.support.fi@thermofisher.com

In the United States:

1-510-979-5000
sales.diagnostics.fmt@thermofisher.com

Find out more at thermofisher.com/indiko
thermofisher.com/indikoplus

ThermoFisher
SCIENTIFIC