

iCount5 TS



Technical Specifications

Parameter	25 reportable parameters: WBC, BASO#, NEUT#, EOS#, LYM#, MON#, BASO%, NEUT%, EOS%, LYM%, MON%, RBC, HGB, MCV, MCH, MCHC, RDW-CV, RDW-SD, HCT, PLT, MPV, PDW, PCT, PLCR, PLCC
	10 research parameters: Blast#, Blast%, ALM#, ALM%, IMM#, IMM%, Left#, Left%, NRBC#, NRBC%
	2 scattergrams, 2 histograms
Test Principle	Semiconductor laser flow cytometry + Cytochemical staining + Impedance method for WBC differential Cyanide-free colorimetry for hemoglobin test
	Impedance method for RBC and PLT counting
Throughput	CBC+DIFF: 60 samples per hour
Sample mode	Whole blood mode Micro-WB mode Pre-dilute mode
Sampling type	Manual or automated sampling (Auto-loader is optional) At least 200,000 results
Data system	RJ45 network interface, USB interface, Support bi-directional LIS
Power consumption	240VA
Dimension(D×W×H)	679mm×556mm×531mm (with auto-loader), 520mm×380mm×531mm (without auto-loader)
Weight	iCounts TS: 48kg (with auto-loader), 40kg (without auto-loader)



NEXT GenWorks

Defining tomorrow, today.

Call us at +91 98205 26474 to know more or Mail us at sreeram.gopal@genworkshealth.com

GENWORKS HEALTH PRIVATE LIMITED

Unit 522-524, 5th Floor, Gamma Block,
Sigma Soft Tech Park, Bangalore - 560 066, India

Visit our website



Visit our store



Specifications subject to change without notice.
20210405



**ONE SINGLE MINUTE
ONE DROP OF BLOOD
ONE CLICK**

iCount5 TS

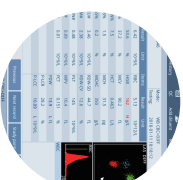


NEXT GenWorks

Defining tomorrow, today.

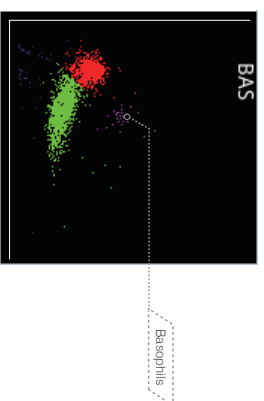
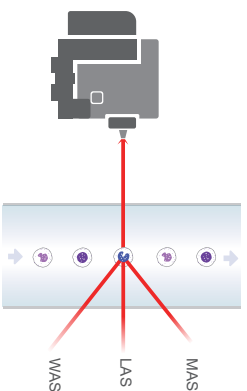
After years of technological accumulation in Hematology analysis field, we develop an instrument named iCount5 TS which is reliable for your choice.

iCount5 TS is a very compact 5 part DIFF instrument. Ensuring efficiency and accuracy, guaranteeing reliability and robustness, iCount5 TS becomes the indispensable hematology analyzer for your laboratory.



- **Unique Comprehensive Clinical Information**
- 5-Part WBC differentiation, 35 parameters
- 2 scattergrams, 2 histograms
- 60 Test/Hour
- Only 25 μ l sample volume for CBC + DIFF measurement

Advanced Principle



- Tri-angle laser scatter + flow cytometry+ cytochemical staining, achieving a betterment of 5-part WBC differentiation
- Basophils are counted by laser scatter that detects information about cell volume and cellular complexity & granularity



User-friendly Design

- Compact design
- High resolution 10.4 inch touch screen
- Multi-language operating interface
- Large storage capacity up to 200,000 samples
- Closed tube for STAT samples
- Rotate the tube automatically, avoid barcode scanning error
- Reagents could be stored in the instrument to save space



Flexible Option

- Auto-loader is optional

